



Babylon Junior-Senior High School  
PSAT Workshop

Thursday, January 12, 2017  
Achieving Success on the SAT &  
ACT

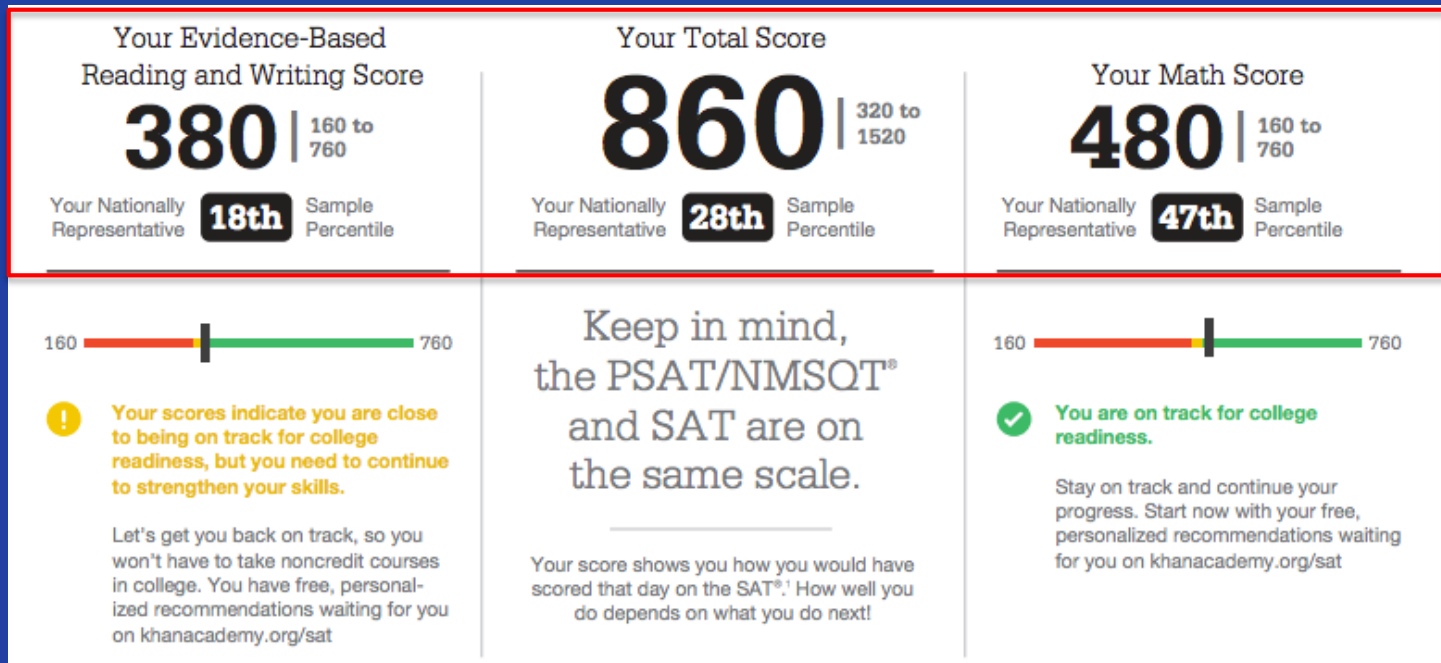
Kevin Dennis

Director of Long Island Classes, Method Test  
Prep

# Part I

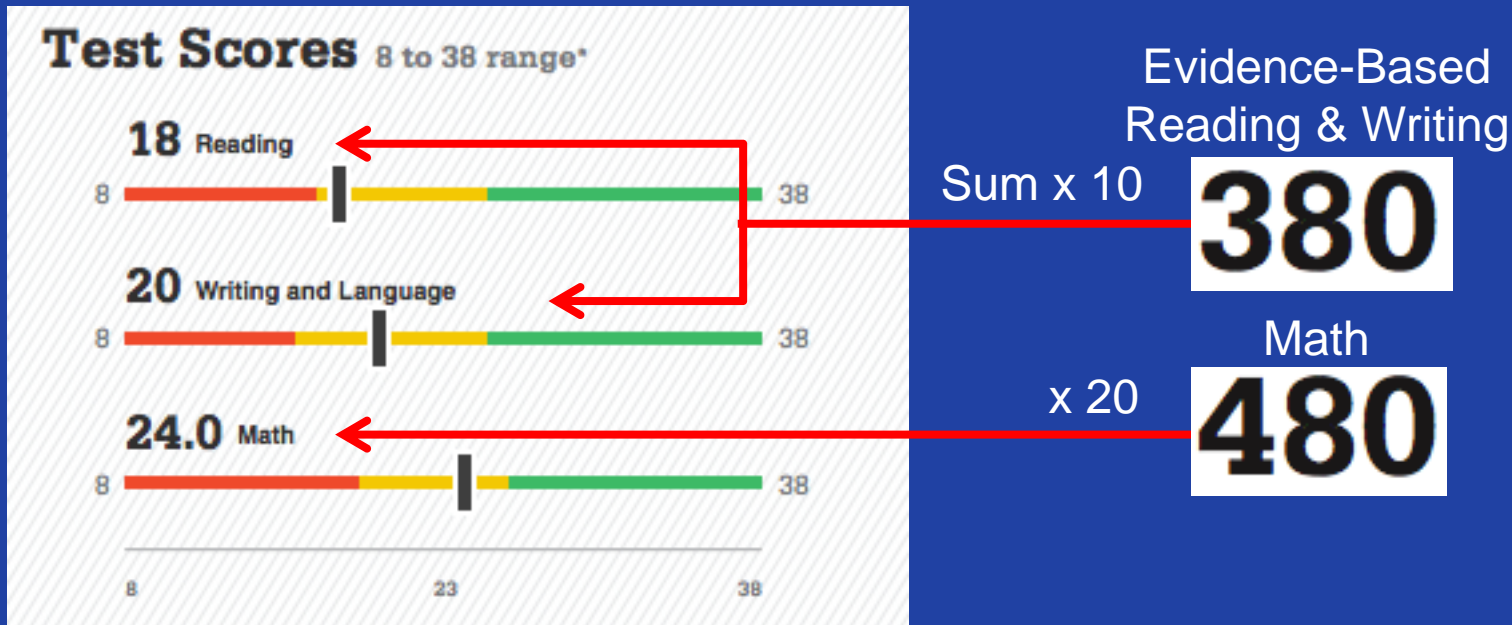
## Understanding Your PSAT Report

# The Big-Picture Scores



- The total score is 1520? How does this align with an SAT score?
  - Keep in mind that the PSAT is slightly shorter & easier
  - “Vertical scoring scale” means you can equate PSAT & SAT
  - Colors indicate performance

# Where Did the Scores Come From?



- Think of these as preliminary scores that are then scaled
  - The Reading and Writing & Language scores contribute equally to the Evidence-Based Reading & Writing Score
  - The Math score came from the No-Calculator and Calculator-based sections

# More Numbers...



Reading

Writing & Language

Math

- The Subscores are meant to tell you how well you performed on specific question types
- Use in conjunction with final page of the report (your answers and key) to learn where you need to improve most
- The “Cross-Test Scores” aren’t particularly useful

**Cross-Test Scores** 8 to 38 range

**19** Analysis in History/Social Studies

**18** Analysis in Science

(It's likely that no one cares)

# The NMSQT Index

## Your NMSC Selection Index

**124\***

NMSC uses a Selection Index based on PSAT/NMSQT scores as an initial screen of students who enter its scholarship programs. To calculate your Selection Index, double the sum of your Reading, Writing and Language, and Math Test scores.

## Eligibility Information

\*The asterisk (\*) next to your Selection Index means you **do not** meet entry requirements for the 2017 National Merit Scholarship Program. See your responses to entry requirements to the right.

NOTE: Students leaving high school and entering college in 2018 or later must take the PSAT/NMSQT again in their 3<sup>rd</sup> year (junior year) of grades 9–12 to enter the National Merit Scholarship Program.

- Ranges from 48 to 228
- Used to gauge whether you are in contention for National Merit Scholarship
  - Commendation
  - Semi-Finalist
  - Finalist
- Scholarship status is announced in fall of senior year (only juniors are eligible)

# Taking Advantage of Your Report

Quest	Correc	Your A	Difficu	Subsc	Cross-Score
1	A	✓	■ ■ ■ ■	HOA	
2	B	✓	■ ■ ■ ■	PSD	
3	A	✓	■ ■ ■ ■	PSD	HSS
4	C	✓	■ ■ ■ ■	HOA	
5	D	✓	■ ■ ■ ■	PSD	
6	B	✓	■ ■ ■ ■	HOA	
7	C	✓	■ ■ ■ ■		
8	C	A	■ ■ ■ ■	PSD	sci
9	B	✓	■ ■ ■ ■	PSD	sci
10	B	✓	■ ■ ■ ■	PAM	

**Key:**  
✓ Correct  
∅ Omitted  
U Unscorable  
■ ■ ■ ■ Easy  
■ ■ ■ ■ Medium  
■ ■ ■ ■ Hard

**Subscore:**  
**COE** Command of Evidence  
**WIC** Words in Context  
**EOI** Expression of Ideas  
**SEC** Standard English Conventions  
**HOA** Heart of Algebra  
**PSD** Problem Solving and Data Analysis  
**PAM** Passport to Advanced Math

- Review the problems you got incorrect!
- To do so, log in at the URL and use your access code

Use this to see the test questions

access code  
A02670146P

See the questions and answer explanations online

[studentscores.collegeboard.org](http://studentscores.collegeboard.org)

# Part II

## The SAT



# SAT – Reading

- Content Areas
  - No sentence completions! (Dedicated Vocabulary Questions)
  - Reading comprehension (passages & questions)
  - Integrated graphics & data interpretation questions
  - Evidence questions
  - Vocab in context
- Structure & Scoring
  - 1 section
  - 65 min (60 min PSAT)
  - Score range 10-40 (will combine with Writing & Language to create a score from 200-800)

# Question Type – Main Idea

- Use key phrases
  - “Main purpose”; “Main idea”;
  - “Primarily serves to”
  - Bottom line: “What’s the point?”
- Flaw in student approach: letting the answers drive the thought process
  - Instead, go back, read reference lines, try to derive your *own* idea *before* looking at choices; then align own answer to choices
- Answers always contain distractors that seem relevant, but don’t actually answer question

11

The references to the shoemaker, the programmer, and the apple farmer in lines 37-40 (“We can easily . . . community”) primarily serve to

- A) illustrate the quality of products and services in countries around the world.
- B) emphasize the broad reach of technologies used to connect people.
- C) demonstrate that recommendations made online are trustworthy.
- D) call attention to the limits of the expansion of the global economy.

12

The passage’s discussion of life in the Soviet Union in the 1960s and 1970s primarily serves to

- A) introduce the concept of social networking.
- B) demonstrate that technology has improved social connections.
- C) list differences between the Soviet Union and other countries.
- D) emphasize the importance of examining historical trends.

1

The main purpose of the passage is to

- A) describe a main character and a significant change in her life.
- B) provide an overview of a family and a nearby neighbor.
- C) discuss some regrettable personality flaws in a main character.
- D) explain the relationship between a main character and her father.

# Question Type – Evidence

- New to the SAT
- Always used as a follow-up question
- Potential for “double-whammy” incorrect answer pattern
- Many of the answers to the evidence question will be relevant to the idea in question: only one will support the idea specifically
- Great technique: anticipate the best evidence yourself; if you don’t see it there, your first answer may be incorrect!

7

It can most reasonably be inferred that after Miss Taylor married, she had

- A) less patience with Mr. Woodhouse.
- B) fewer interactions with Emma.
- C) more close friends than Emma.
- D) an increased appreciation for Emma.

8

Which choice provides the best evidence for the answer to the previous question?

- A) Line 37 (“Miss . . . married”)
- B) Lines 47-48 (“The event . . . friend”)
- C) Lines 60-65 (“A large . . . recollection”)
- D) Lines 73-79 (“How . . . solitude”)

# Question Type – Words in Context

- Will now focus on simple, common words that can take on many different meanings
- Common flaws in student approach: (1) assuming a word is used as it “always” is, (2) not reading far enough around or considering local & global main idea
- Here, student could use phrases around the word (*she “recalled” her past kindness*) and use main idea of passage (that Emma & Miss Taylor had been separated)
- More frequent – will now constitute about 20% of Reading test questions

50 manners; and there was some satisfaction in considering with what self-denying, generous friendship she had always wished and promoted the match; but it was a black morning's work for her. The want of Miss Taylor would be felt every hour of  
55 every day. She recalled her past kindness—the kindness, the affection of sixteen years—how she had taught and how she had played with her from five years old—how she had devoted all her powers to

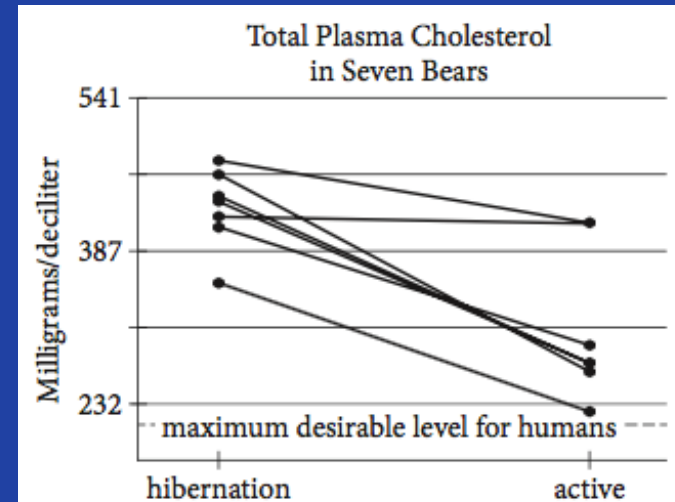
6

As used in line 54, “want” most nearly means

- A) desire.
- B) lack.
- C) requirement.
- D) request.

# Question Type – Data Integration

- New to SAT
- Will pair a relevant graph, table, or chart with the passage
- Students will have to integrate terms and references in the passage with visual information to reach a conclusion
- Common student errors: careless reading of axes; incorrect “extension” of an idea to incorporate unsubstantiated claim
- Will constitute about 5% of Reading test questions



28

Which statement about the effect of hibernation on the seven bears is best supported by the graph?

- A) Only one of the bears did not experience an appreciable change in its total plasma cholesterol level.
- B) Only one of the bears experienced a significant increase in its total plasma cholesterol level.
- C) All of the bears achieved the desirable plasma cholesterol level for humans.
- D) The bear with the lowest total plasma cholesterol level in its active state had the highest total plasma cholesterol level during hibernation.

# SAT – Writing & Language

- Content Areas
  - Grammar
  - Improving sentences
  - Finding errors
  - Improving passages
  - Structure, punctuation, rhetorical skills
  - All passage-based
  - Graphics integration
- Structure & Scoring
  - 1 section
  - 35 min
  - Score range 10-40 (will combine with Reading to create a score from 200-800)
- A near clone of the ACT English section

# An Example: “Red Flag” Words

Where’s the error?

The congressional panel issued their findings after conducting an investigation that lasted for over a year.

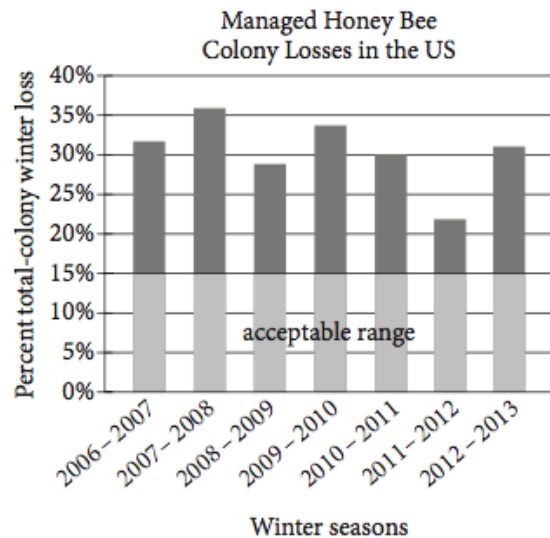
The **congressional panel** issued **their** findings

The congressional panel issued its findings

# Plus Data

- Will also integrate data, whose interpretation can alter the sentence

decreased slightly, and beekeepers speculated that the colonies would recover. Yet in the winter of 2012–2013, the **16** portion of the bee population lost fell nearly 10 percent in the United States, with a loss of 31 percent of the colonies that pollinate crops.



**16**

Which choice offers an accurate interpretation of the data in the chart?

- A) NO CHANGE
- B) portion of bees lost was double what it had been the previous year, rising to
- C) number of losses, which had fallen within the acceptable range the previous year, rose to
- D) portion of total colonies lost rose almost 10 percentage points, with a loss of



# Writing & Language Pitfalls

- #1 most common mistake: not reading enough around the underlined portion
  - Get fuller context
  - Re-read the sentence in full with your choice before moving on
  - For rhetorical (placement, relevance, etc.) errors, students may have to read several sentences or may even have to re-read paragraphs
- Not understanding the subject
  - Distinguish “red flag words” using MTP’s program
    - Pronouns
    - Conjugations of “to be”
  - Highlight prepositional phrases
- Not actually giving the question “what it wants”
  - Don’t simply pick what “sounds good”

**12** pollination—to increase crop output. The importance of bees **13** highlights the potentially disastrous affects of an emerging, unexplained crisis: entire colonies of honeybees are dying off without warning.

**13**

- A) NO CHANGE
- B) highlights the potentially disastrous effects
- C) highlight the potentially disastrous effects
- D) highlight the potentially disastrous affects

**11**

The writer wants a concluding sentence that restates the main argument of the passage. Which choice best accomplishes this goal?

- A) NO CHANGE
- B) Clearly, employers should consider reducing employees’ hours when they are overworked.
- C) Companies should consider employee schedules carefully when implementing a napping policy.
- D) More businesses should follow their lead and embrace napping on the job.

# SAT – Math

- Content Areas
  - Algebra (emphasis here)
  - Geometry (much less)
  - Algebra II (more of it)
  - Data & statistics (more of it)
  - Trigonometry (a little)
  - Extended thinking
  - Multiple choice & grid-in
- Structure & Scoring
  - 2 sections
    - No-Calculator – 25 min
    - Calculator – 55 min (45 PSAT)
  - Score range: 200-800

# Algebra to the Max

- MAJOR emphasis on
  - Constructing algebraic expressions based on statements
  - Algebraic manipulation
    - Factoring
    - Solving in terms of multiple variables
  - Solving multivariable equations
    - Systems
    - “Break-even” and “Two-Variable” problems

5

In a certain game, a player can solve easy or hard puzzles. A player earns 30 points for solving an easy puzzle and 60 points for solving a hard puzzle. Tina solved a total of 50 puzzles playing this game, earning 1,950 points in all. How many hard puzzles did Tina solve?

- A) 10
- B) 15
- C) 25
- D) 35

From No-Calculator section – guess & check method would be too burdensome for most

2

A grocery store sells a brand of juice in individual bottles and in packs of 6 bottles. On a certain day, the store sold a total of 281 bottles of the brand of juice, of which 29 were sold as individual bottles. Which equation shows the number of packs of bottles,  $p$ , sold that day?

- A)  $p = \frac{281 - 29}{6}$
- B)  $p = \frac{281 + 29}{6}$
- C)  $p = \frac{281}{6} - 29$
- D)  $p = \frac{281}{6} + 29$

11

Which of the following is equivalent to  $(s - t)\left(\frac{s}{t}\right)$  ?

- A)  $\frac{s}{t} - s$
- B)  $\frac{s}{t} - st$
- C)  $\frac{s^2}{t} - s$
- D)  $\frac{s^2}{t} - \frac{s}{t^2}$

Basic algebraic skills are often weak

# Understanding Linear Relationships

- MAJOR emphasis on
  - Interpreting slope &  $y$ -intercept terms in context
    - As opposed to simply “find the slope/find the  $y$ -intercept”
  - Constructing linear equations based on relationships
    - As opposed to just “plug & chug”
  - Interpreting models in real-world contexts

11

$$110x + y = 1,210$$

A coffee shop is running a promotion where a number of free coffee samples are given away each day. The equation above can be used to model the number of free coffee samples,  $y$ , that remain to be given away  $x$  days after the promotion began. What does it mean that  $(11, 0)$  is a solution to this equation?

- A) During the promotion, 11 samples are given away each day.
- B) It takes 11 days during the promotion to see 1,210 customers.
- C) It takes 11 days during the promotion until none of the samples are remaining.
- D) There are 11 samples available at the start of the promotion.

8

$$n = 456 - 3T$$

The equation above is used to model the relationship between the number of cups,  $n$ , of hot chocolate sold per day in a coffee shop and the average daily temperature,  $T$ , in degrees Fahrenheit. According to the model, what is the meaning of the 3 in the equation?

- A) For every increase of  $3^\circ\text{F}$ , one more cup of hot chocolate will be sold.
- B) For every decrease of  $3^\circ\text{F}$ , one more cup of hot chocolate will be sold.
- C) For every increase of  $1^\circ\text{F}$ , three more cups of hot chocolate will be sold.
- D) For every decrease of  $1^\circ\text{F}$ , three more cups of hot chocolate will be sold.

9

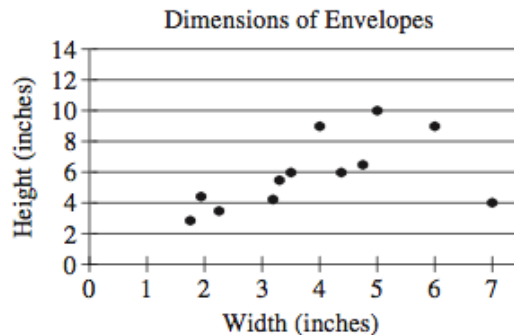
A truck enters a stretch of road that drops 4 meters in elevation for every 100 meters along the length of the road. The road is at 1,300 meters elevation where the truck entered, and the truck is traveling at 16 meters per second along the road. What is the elevation of the road, in meters, at the point where the truck passes  $t$  seconds after entering the road?

- A)  $1,300 - 0.04t$
- B)  $1,300 - 0.64t$
- C)  $1,300 - 4t$
- D)  $1,300 - 16t$

# Basic and Intermediate Statistics Interpretation

- MAJOR emphasis on
  - Graph reading & information gathering from charts
  - Understanding line of best fit

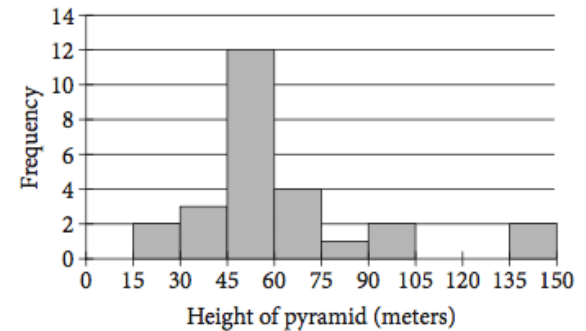
9



The scatterplot above shows the widths and the heights of 12 types of rectangular envelopes. What is the width, in inches, of the envelope represented by the data point that is farthest from the line of best fit (not shown) ?

- A) 2
- B) 5
- C) 7
- D) 12

13



The histogram above shows the distribution of the heights, in meters, of 26 pyramids in Egypt. Which of the following could be the median height of the 26 pyramids represented in the histogram?

- A) 44 meters
- B) 48 meters
- C) 63 meters
- D) 77 meters

15

In 2012 the total population of individuals in the United States who were between 14 and 17 years old (inclusive) was about 17 million. If the survey results are used to estimate information about summer employment of teenagers across the country, which of the following is the best estimate of the total number of individuals between 16 and 17 years old in the United States who had a summer job in 2012 ?

- A) 8,200,000
- B) 3,900,000
- C) 2,000,000
- D) 390,000

	Have a summer job	Do not have a summer job	Total
Ages 14–15	20	69	89
Ages 16–17	39	42	81
Total	59	111	170

# Quadratics

- Significant Emphasis on Quadratics
  - Understanding algebraic and graphical relationship between standard form, factors, and roots
  - Graphs of polynomial functions
  - Will be mostly more difficult questions

17

If  $x - 2$  is a factor of  $x^2 - bx + b$ , where  $b$  is a constant, what is the value of  $b$  ?

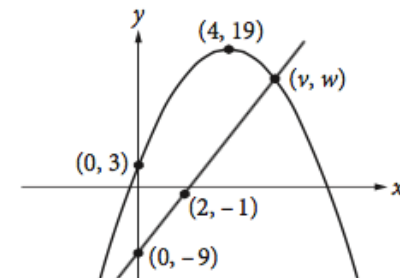
6

$$2x^2 + 7x - 15 = 0$$

If  $r$  and  $s$  are two solutions of the equation above and  $r > s$ , which of the following is the value of  $r - s$  ?

- A)  $\frac{15}{2}$
- B)  $\frac{13}{2}$
- C)  $\frac{11}{2}$
- D)  $\frac{3}{2}$

28



The  $xy$ -plane above shows one of the two points of intersection of the graphs of a linear function and a quadratic function. The shown point of intersection has coordinates  $(v, w)$ . If the vertex of the graph of the quadratic function is at  $(4, 19)$ , what is the value of  $v$  ?

# Mathematics Suggestions

- Redouble efforts to bolster your basic and intermediate algebra skills
  - “Algebraic gymnastics”
- You should be comfortable reading two-way tables and graphical figures
- Emphasize proportional reasoning
  - Will be useful for linear relationships and converting
- Know your mean, median, and standard deviation
  - E.g., how manipulating the data can or can't change the mean; working with weighted averages; frequency histograms

# SAT – Evidence-Based Writing

- Formulate arguments based on a provided document
- Optional, but recommended
- Essay Structure & Scoring
  - 50 min
  - 3 sub-scores graded on 0-8 scale
  - Scored out of 12
  - Does NOT affect the main score.
- Suggestion: consider elements of persuasion prior to test
  - Language choice, rhetorical style, irony, sarcasm, appeal to emotion, logic, etc.



# General Points

- January 2017 is last January exam. Switching to August. First administration is August 26, 2017. We are unsure how this will affect QAS.
- Each question is worth approximately 10 points. An extra 5 questions correct on any section is worth about 50 points.

# Part III

## The ACT

# ACT Overview

English

Math

Reading

Science

75 questions  
45 minutes

60 questions  
60 minutes

40 questions  
35 minutes

40 questions  
35 minutes

- Questions more straightforward
- English is the same as SAT Writing & Language section
- **PACE IS A HUGE FACTOR**
- Science isn't really "science" – it's glorified reading comprehension with charts and graphs
- All section scores out of 36; averaged for composite out of 36
- Optional Essay at end of test – 40 min, response integrating perspectives; graded out of 36, but does not affect the composite score

# Math – *Some* More Stats and Probability

- There has been a *slight* increase in the proportion of basic statistics and probability questions
  - Mean, median, mode, range, basic probability of events
- Greater emphasis on “STEM”-related problems more likely to be encountered in college
- Still a majority emphasis on algebra I and II and geometry
- Questions more straightforward than SAT math questions

27. In a chemistry course, a student scored 99 on one test, 98 on another test, and 88 on each of the other tests. The student's test average for the course, where each test is weighted equally, is exactly 91. What is the *total number* of tests that the student has taken in the course?

A. 3  
B. 4  
C. 5  
D. 7  
E. 12

53. A box contains 6 identically sized, solid-colored balls. One ball is green, 2 are yellow, and 3 are red. A ball is drawn at random and returned to the box, then a second ball is drawn at random. What is the probability that the first ball is red and the second ball is green?

A.  $\frac{1}{12}$   
B.  $\frac{1}{10}$   
C.  $\frac{1}{3}$   
D.  $\frac{2}{3}$   
E.  $\frac{7}{10}$

# Reading – Paired Passages

- Through 2013, Reading test featured 4 passages with 10 questions each, to be completed in 35 min
- One of the four passages now is “paired”
- Questions apply to one or the other passage, or both
- Hasn’t significantly increased difficulty – aligns with SAT Reading
- Questions concern main idea, vocab in context, inference, details

Questions 11–13 ask about Passage A.

11. Which of the following statements about automobiles in San Francisco in 1903 is best supported by Passage A?

- A. They were affordable for the average citizen but unpopular nevertheless.
- B. They were used more by tourists for sightseeing purposes than by citizens for practical purposes.
- C. They failed to capture the public imagination in spite of huge public relations efforts.
- D. They were considered a public nuisance by all but a small segment of the population.

12. Which of the following terms in Passage A is used more figuratively than literally?

- F. Puddles (line 11)
- G. Monuments (line 13)
- H. Bells (line 18)
- J. Hills (line 39)

13. The purpose of the quotation marks around the word *accessories* in line 29 is most likely to:

- A. suggest that the features were actually essentials.
- B. indicate that the word appeared in legal documents.
- C. emphasize that the word was widely misunderstood.
- D. clarify that inexpensive automobiles had some luxury features.

Questions 14–17 ask about Passage B.

14. Which of the following statements best captures how Passage B characterizes the failure of the Edsel?

- F. It happened gradually and went unnoticed at the time by the public.
- G. It happened quickly despite promising initial sales.
- H. It was on a huge scale, occurred swiftly, and was a public event of sorts.
- J. It occurred when other automakers were doing well and therefore embarrassed Ford all the more.

15. The statement in lines 43–45 is typical of Passage B in the way it:

- A. contrasts data about the Edsel with data about other cars of the 1950s.
- B. conveys the obligation that Ford executives felt to involve consumers in the design of the Edsel.
- C. combines an industry perspective on the Edsel with that of the typical consumer.
- D. suggests the entire Edsel enterprise was marked by extremes.

16. Which of the following events referred to in Passage B occurred first chronologically?

- F. E-Day ended.
- G. The stock market plunged.
- H. Edsel sales dropped below 45,000.
- J. Edsel sales reached 2,846.

17. As it is used in the passage, the term *premium cars* (line 86) serves primarily as a:

- A. reference to what Edsels have become now that they are valued antiques.
- B. name for a type of car that was ushered in by the makers of the Edsel.
- C. label for a category of cars that the makers of the Edsel intended it to belong to.
- D. derisive term used sarcastically by Edsel owners who were disappointed in their purchase.

Questions 18–20 ask about both passages.

18. A similarity between the two passages is that they both:

- F. examine their topics from a significant distance of time.
- G. reveal the author’s professional background as a way of lending credibility to the text.
- H. assert that automobiles have contributed little that is worthwhile to society.
- J. incorporate information about traffic and road conditions into a discussion of automobile design.

19. An element of Passage A that is not present in Passage B is a reference to what aspect of the automobile culture?

- A. Related legislation
- B. Public opinion
- C. Economics
- D. Quotations from industry experts

20. If publicity experts had been assigned to build enthusiasm for the cars mentioned in Passage A using the methods described in Passage B, the experts would most likely have first released photos to the press that showed:

- F. cars going up Nineteenth Avenue in San Francisco.
- G. a single detail such as a gleaming headlight or a polished door handle.
- H. the meticulous work done along the assembly line to ensure the quality of the new car.
- J. an attractive young couple smiling as they enjoy a car ride past horses grazing in pastures.

# Science – 7 to 6 Passages...

## ...and Back Again

- Through 2015, Science always featured 7 passages
- On February 2015 exam, there were only 6 passages (same total # of questions)
- Each subsequent exam featured 6 passages until...
- ...December 2015, on which there were 7 again!
- Greater prevalence of “experimental procedure” questions, but overall, there is lots of graph and chart interpretation

22. Suppose Experiment 3 had been repeated, except that each pendulum had a string length of 200 cm. Based on the results of Experiments 2 and 3, the graph of predicted  $T$  versus  $M$  for the pendulums would most likely have been a:
- F. straight horizontal line crossing both vertical axes at approximately 2.01 sec.
  - G. straight horizontal line crossing both vertical axes at approximately 2.85 sec.
  - H. curve crossing the left vertical axis at approximately 2.01 sec, increasing as  $M$  increases.
  - J. curve crossing the left vertical axis at approximately 2.85 sec, increasing as  $M$  increases.
28. Suppose that the apparatus had been fitted with a rigid, airtight cap instead of the balloon, and that the baking soda had been contained in a chamber below the cap. If the baking soda in the chamber had been released by remote control into the vinegar, which of the students would have been likely to predict that the mass reading on the balance would *decrease* ?
- F. Student 1 only
  - G. Students 1 and 3 only
  - H. Students 2 and 3 only
  - J. Students 1, 2, and 3
37. Suppose equal masses of the combined sediment samples from a depth of 8 cm at Site 1 and of the combined sediment samples from a depth of 8 cm at Site 2 had been thoroughly mixed and then analyzed for  $^{210}\text{Pb}$ . Based on the results of Study 1, the  $^{210}\text{Pb}$  concentration would most likely have been:
- A. less than 30 Bq/kg.
  - B. between 30 Bq/kg and 45 Bq/kg.
  - C. between 45 Bq/kg and 60 Bq/kg.
  - D. greater than 60 Bq/kg.

# ACT – Essay

- The “New” ACT Essay is *not that much different* from the old one – 40 minutes now
- Pick a side (just like the old one), but address each of the positions as it aligns with/conflicts with your position
- Now on 1–36 scale

Perspective One	Perspective Two	Perspective Three
<p>What we lose with the replacement of people by machines is some part of our own humanity. Even our mundane daily encounters no longer require from us basic courtesy, respect, and tolerance for other people.</p>	<p>Machines are good at low-skill, repetitive jobs, and at high-speed, extremely precise jobs. In both cases they work better than humans. This efficiency leads to a more prosperous and progressive world for everyone.</p>	<p>Intelligent machines challenge our long-standing ideas about what humans are or can be. This is good because it pushes both humans and machines toward new, unimagined possibilities.</p>

**Essay Task**

Write a unified, coherent essay in which you evaluate multiple perspectives on the increasing presence of intelligent machines. In your essay, be sure to:

- analyze and evaluate the perspectives given
- state and develop your own perspective on the issue
- explain the relationship between your perspective and those given

Your perspective may be in full agreement with any of the others, in partial agreement, or wholly different. Whatever the case, support your ideas with logical reasoning and detailed, persuasive examples.

# Part IV

A Logical Prep Timeline  
and  
How to Prepare



# A Smart Timeline for Prep

## SAT

- Juniors: Start preparing now
- Shoot for May (or March) exam
  
- Sophomores: Prepare over the summer
- Shoot for August (or October) exam
  
- Question-Answer Service (QAS)
  - January
  - May
  - October

## ACT

- Juniors: Start preparing now
- Shoot for April (or June) exam
  
- Sophomores: Start preparing during the summer
- Shoot for September exam
  
- Test Information Release (TIR)
  - December
  - April
  - June

# Differences Between Two Exams

## SAT

- More time for questions: e.g. Reading.
- Order of sections: Reading, W&L, Math No Calc., Math Calc. allowed, Essay (optional).
- Reading: Longer and incorporates graphs.
- Grammar: “Writing & Language”, not as long but slightly harder.
- Math: Not as advanced, though considered trickier. Formulas provided. No calculator section.
- Science: Incorporated in the Reading section.
- Social Studies: Incorporated in the Reading section.

## ACT

- Pace is a huge factor especially on Reading and Science sections.
- Order of sections: English, Math, Reading, Science, Essay (optional).
- Reading: Timing is tight. Specific order of passages.
- Grammar: “English,” longer, less time, but more straightforward questions.
- Math: More advanced (more trig, logs, matrices). No formulas provided. Calculator allowed.
- Science: Dedicated section. Interpreting charts and graphs. Reading section specifically for science.
- Social Studies: Incorporated in two passages of Reading section.

# Prep Suggestions

- Practice early and often by taking timed sections
- Take full-length practice tests
- Find a comprehensive prep resource
- Know that just a few questions can make a huge difference

# MTP Online

- Babylon students access accounts through Castle Learning. Visit [www.methodtestprep.com/help](http://www.methodtestprep.com/help) for instructional video.
- Complete SAT and ACT courses
- Lessons, quizzes, audio/video explanations, vocab builder
- Go at your own pace, access from anywhere with internet

# A Structured Checklist of Tasks

## Week 2

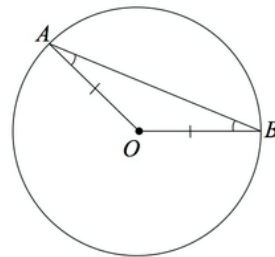
6. Take the Reading Evaluation (approx. 25 min.)
7. Take the Math Evaluation (approx. 25 min.)
8. Take the Writing and Language Evaluation (approx. 25 min.)
9. Math Lesson #1: Plug in Numbers (approx. 15 min.)

## Week 3

10. Reading Lesson #1: Best Reading Practices (approx. 15 min.)
11. Writing and Language Lesson #1: Subject Verb Agreement (approx. 15 min.)
12. Math Lesson #2: Literal Equations (approx. 15 min.)
13. Reading Lesson #2: Strategy for Vocab in Context (approx. 15 min.)

# Rich, Engaging Lessons

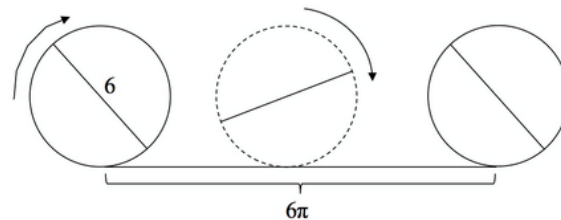
2. When you have a triangle whose sides are the radii of a circle, the triangle is isosceles or *MAYBE* equilateral. We'll get to the "maybe" part in the example problems, but here's the bottom line: any triangle with equal sides will also have equal angles. For example, in the figure below,  $AO = OB$ , so  $\angle A = \angle B$ , making an isosceles triangle.



3. When a circle is "rolled" on its outer edge, or when the total distance around the circle must be calculated, the factor under consideration is its circumference. The distance covered by a circle that rolls once around on a straight line is equal to the circle's circumference. For example, in the figure below, the circumference of the circle is 6 units, so in one roll, it would cover a distance equal to its circumference. Since

$$C = \pi d$$

this would be a total length of  $6\pi$ .



4. To find the area of a shaded region, find the area of the largest figure, and subtract the area of the part

# Instant-Feedback Quizzes

B. traveled. Answer You Submitted

C. invented. ✔ Correct Answer

D. published.

The correct answer is C. The answer you entered was B.

[Go To Next Question](#)

## Explanation



### Your Explanation Video

As used in line 46, "pioneered" most nearly means

- A) revised.
- B) traveled.
- C) invented.
- D) published.

45 To investigate just how *thermophilus* can survive extreme temperatures, van Koop pioneered lab techniques that would allow him to isolate the bacteria's proteins without disturbing their natural structure. "These proteins are very difficult to collect," van Koop notes. "No one had really tried to isolate *thermophilus* proteins before, so we had to

Context

# Even More Features!

- Full-length exams
- Concept summary reports – highlight strengths and weaknesses
- Quiz on-demand
- Vocabulary Builder



# What Else from MTP?

- Completely interactive web-based courses and tutoring
- SAT & ACT “Miniseries” provides focus the week before tests
- Incredible support

Prep Course at  
Babylon  
methodtestprep.com  
/Babylon  
Prepares for Apr ACT  
& May SAT  
Starts March 7

Babylon  
SAT/ACT Prep Class

PREPARATION FOR THE APRIL 8 ACT AND MAY 6 SAT

Twelve 2-Hour Classes  
Tuesdays and Thursdays  
7 to 9 pm  
at the Babylon High School

Cost: \$375

March 7, 9, 14, 16, 21, 23, 28, 30  
April 18, 20, 25, 27

Required Texts:

The Official SAT Study Guide (2016 Edition) by The College Board  
The Official ACT Prep Guide (2016-2017) by Wiley  
Both are available online and at local bookstores

Visit [www.collegeboard.org](http://www.collegeboard.org) to register and pay for the SAT exam  
Visit [www.act.org](http://www.act.org) to register and pay for the ACT exam

Babylon High School students have free access to the Method  
Test Prep website through their Castle Learning accounts.

Registration: [www.methodtestprep.com/babylon](http://www.methodtestprep.com/babylon)

Questions? Contact Kevin Dennis

[kdennis@methodtestprep.com](mailto:kdennis@methodtestprep.com) or 516-597-4997



# Thanks for Listening!



Questions?

[tutoring@methodtestprep.com](mailto:tutoring@methodtestprep.com)

516-597-4999

[kdennis@methodtestprep.com](mailto:kdennis@methodtestprep.com)

516-597-4997